

March 2026

# National Dairy FARM Program

Jamie Jonker, Ph.D. – Chief Science Officer – National Milk Producers Federation



# HISTORY

In 2009, National Dairy Farmers Assuring Responsible Management (FARM)<sup>™</sup> Program was **created by the dairy industry**, through National Milk Producers Federation with support from Dairy Management, Inc.



Through the Innovation Center, the dairy community has aligned behind FARM as the **industry-wide social responsibility program.**



# PROGRAM AREA HISTORY

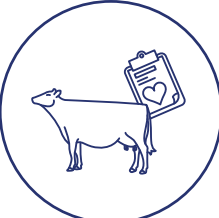
1990



ANTIBIOTIC STEWARDSHIP

1990

2000



ANIMAL CARE

2009

2010

2017




ENVIRONMENTAL STEWARDSHIP



WORKFORCE DEVELOPMENT

2018

2021

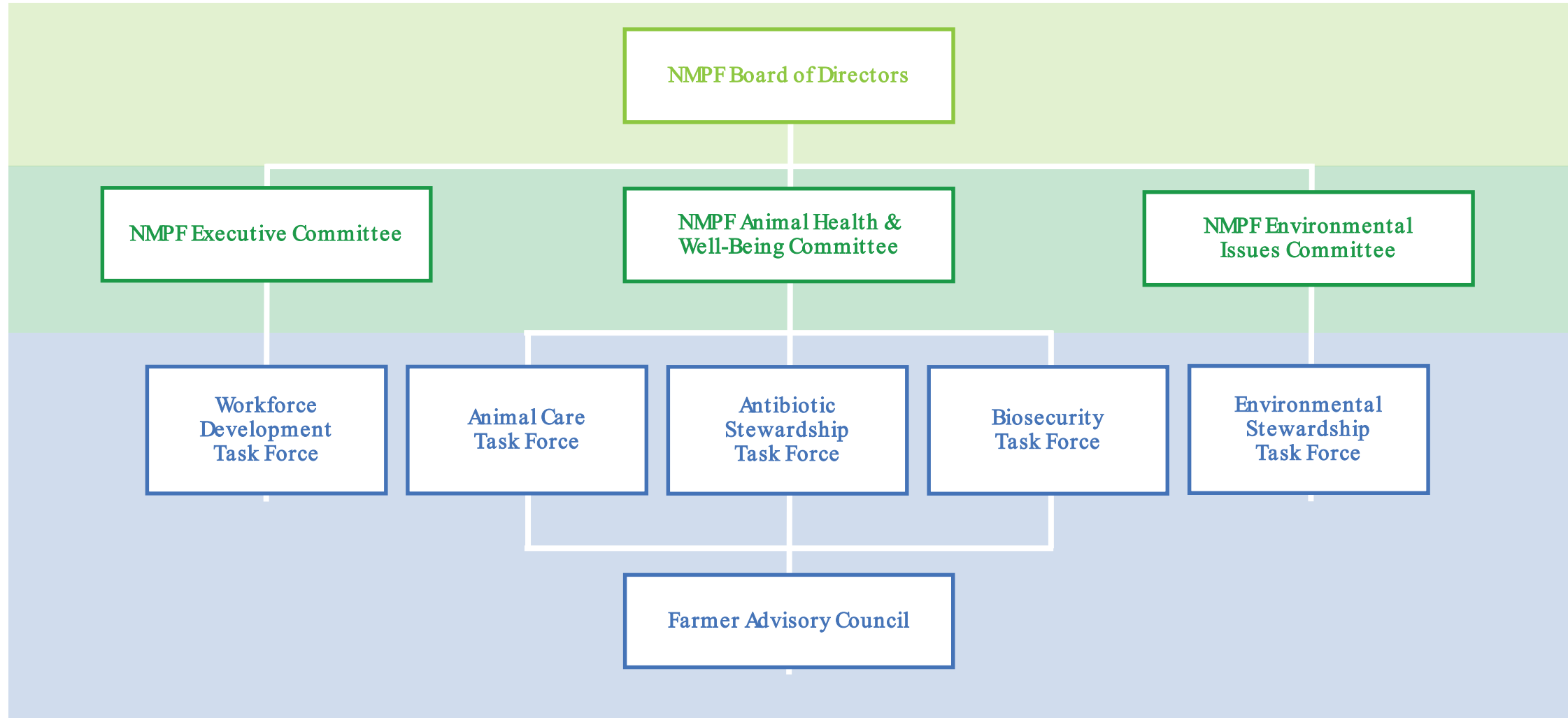


BIOSECURITY

2020



# WHO MAKES DECISIONS ABOUT FARM?

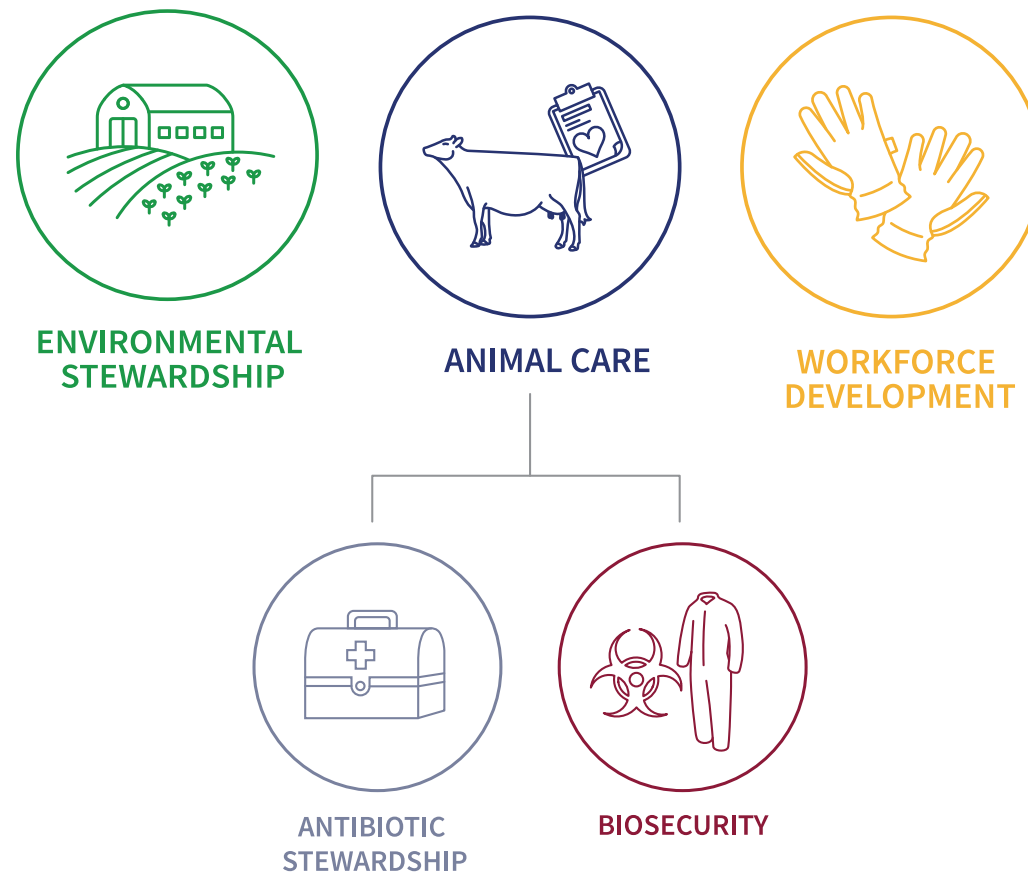


Approval     Recommendation     Guidance/Input & Ambassadors

# AT A GLANCE

- 1 Cooperatives and processors **sign up** to participate in one of three of the program areas on behalf of their member farms or patrons
- 2 Subject matter experts, including farmers, draft **science-based standards and best management practices** then NMPF board of directors approves
- 3 Evaluators conduct **second-party evaluations** and identify achievements and continuous improvement opportunities
- 4 Verifiers conduct **third-party verifications** for Animal Care only
- 5 Cooperatives and processors use **on-farm data** for **proof points to communicate** with customers and consumers

## PROGRAM AREAS EVALUATED





# ANIMAL CARE

---

Demonstrating excellent cow care

# CERTIFICATIONS

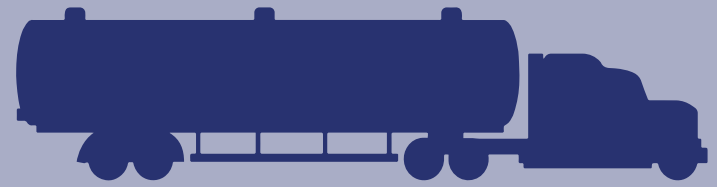


International Organization  
for Standardization



Professional Animal Auditor  
Certification Organization

150+ PARTICIPANTS



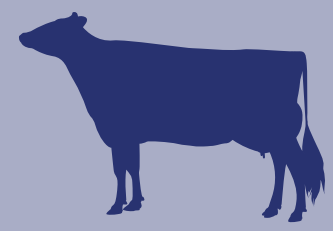
99%  
OF THE  
UNITED STATES  
MILK SUPPLY  
IN 49 STATES

>100,600

SECOND-PARTY  
EVALUATIONS  
COMPLETED TO DATE



**BY THE NUMBERS**



~400

CERTIFIED FARM  
ANIMAL CARE EVALUATORS

# Evolution of FARMA Animal Care

V5 evaluations began July 1, 2024

Version 1 (2009-2012)	Version 2 (2013-2016)	Version 3 (2017-2019)	Version 4 (2020-2024)	Version 5 (2024-2027)
Voluntary Participation	Mandatory Participation	Greater Accountability (Farm, Co-op, Processor)	Increased Accountability (Farm, Co-op, Processor)	Refinement
	Voluntary Action Plans	Mandatory Corrective Action Plans	Immediate Action Plans	
		Continuous Improvement Plans	Shortened Timelines for Action Plans	
		Conditional Certification/Decertification	Implementation Oversight	

Steady progress to give farmers and industry time to adjust.

# Version 4 to Version 5 Key Changes

The following changes were approved by the NMPF Board of Directors in March 2023 to be implemented in FARM Animal Care Version 5:

- **Locomotion**
  - Establish benchmark for moderate lameness 15% with associated Continuous Improvement Plan (CIP)
- **Disbudding**
  - Elevate pain management standard from Continuous Improvement Plan (CIP) to Mandatory Corrective Action Plan (MCAP)
  - Acceptable methods: Caustic Paste & Cautery
- **Calves**
  - Revision to how colostrum feeding standards are evaluated: Meet quantity (10% birth weight), quality (visual, colostrometer, etc.) and timeliness (within six hours) guidelines; OR evidence of successful transfer of passive immunity
- **Continuing Education**
  - Elevate Family Employee standard from Continuous Improvement Plan to Mandatory Corrective Action Plan (MCAP)
- **Euthanasia**
  - Identification primary & secondary individuals for euthanasia implementation
  - Confirmation of death in protocol
- **Program Implementation**
  - Establish discovery process between FARM & co-op/processor for farms that exceed animal observation benchmarks significantly



# ANTIBIOTIC STEWARDSHIP

---

Producing safe, wholesome milk

# ANTIBIOTIC STEWARDSHIP INITIATIVES

Responsible antibiotic use is needed for quality animal care management and production of dairy products.

Represent the U.S. dairy industry nationally and globally

Leading the charge assuring judicious antibiotic use since the 1990s

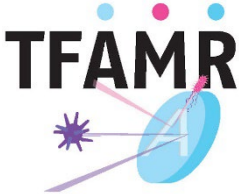
Producer education resources



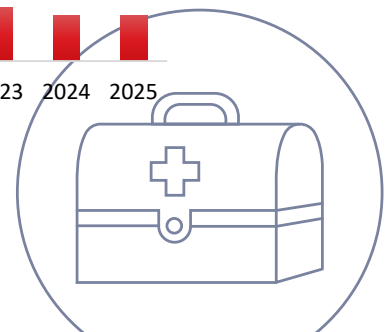
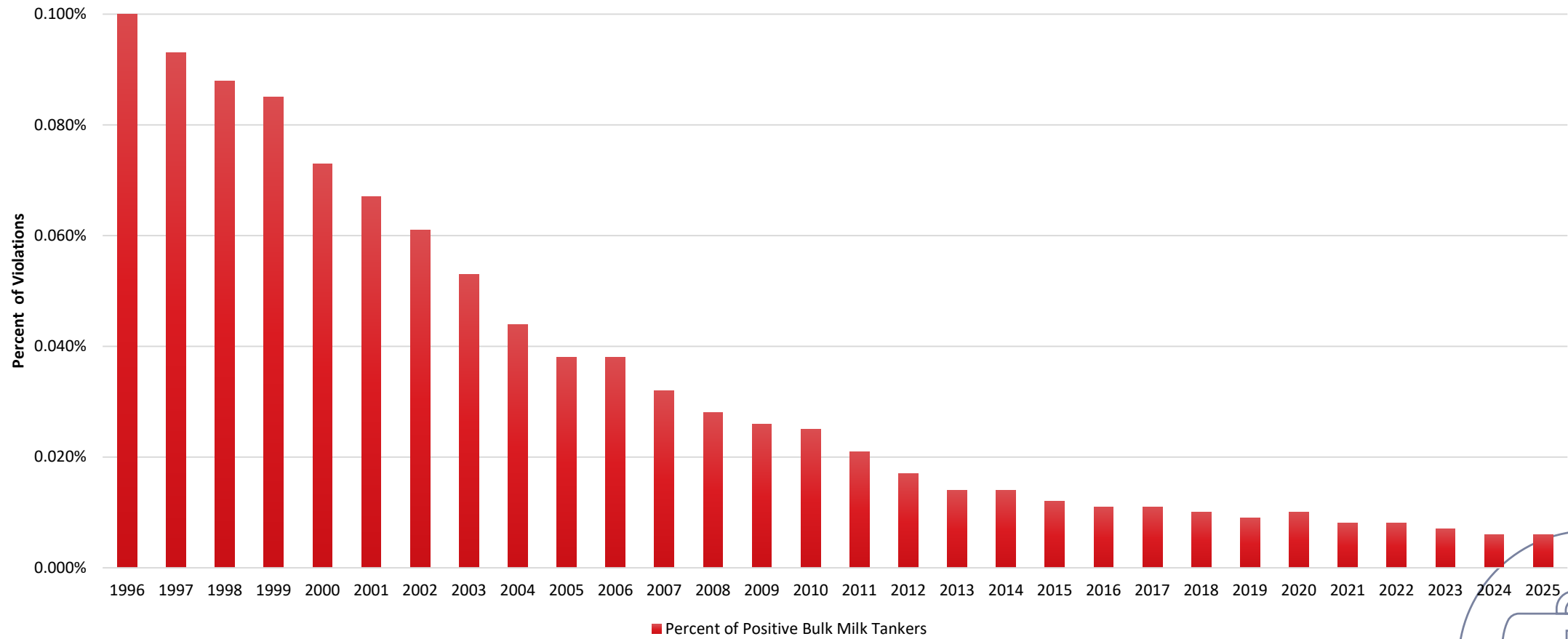
Partners with industry experts to ensure antibiotic stewardship measures are scientifically sound



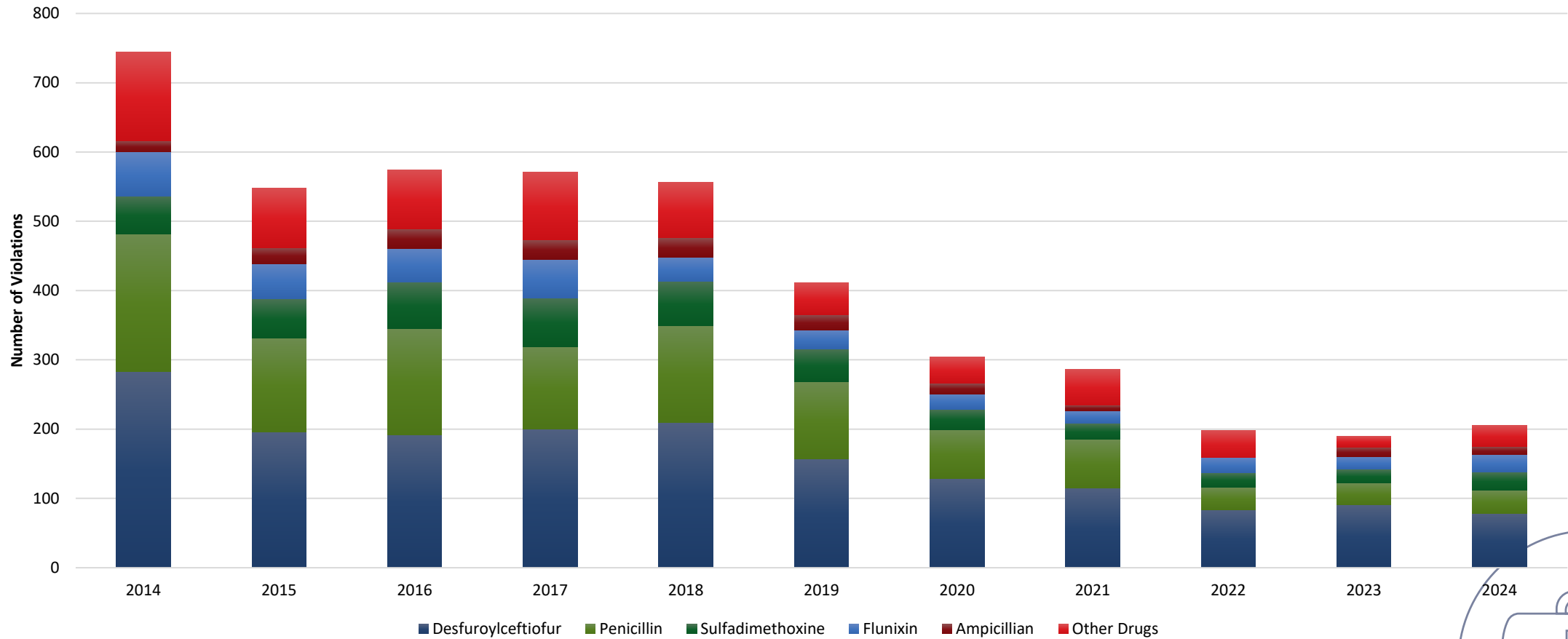
Grade "A"  
Pasteurized  
Milk  
Ordinance



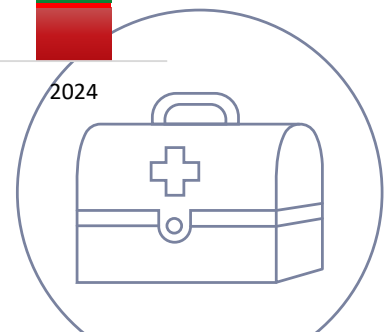
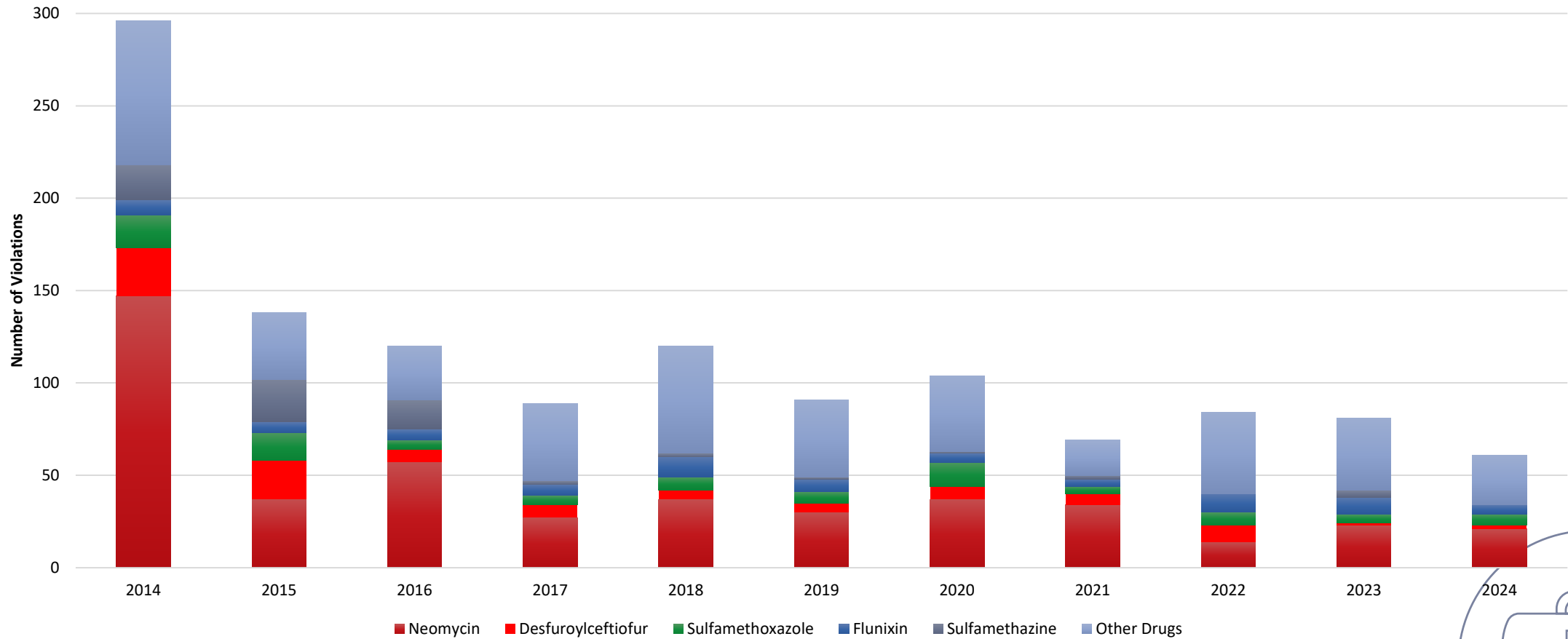
# PERCENT OF BULK MILK TANKERS POSITIVE FOR ANTIBIOTIC RESIDUES



# DAIRY CULL COW TISSUE RESIDUE VIOLATIONS



# BOB VEAL TISSUE RESIDUE VIOLATIONS





# ENVIRONMENTAL STEWARDSHIP

---

Protecting the environment  
for generations to come

# ENVIRONMENTAL STEWARDSHIP

*Quantifies a dairy farm's GHG+energy use footprints and assesses use of nutrient management plans*

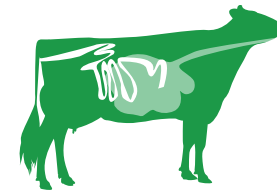
**6,500+** assessments completed to-date

*Over 1,800 FARMES Version 3 evaluations representing 44 states.  
Herd sizes ranging from 10 to 30,000 head.*

**53** participating organizations representing **80%** of milk supply

- Strong science with periodic updates
- Unifies response to Scope 3 reporting needs + enables supply chain collaboration
- Optional Conservation Practice Questionnaire add-on

Footprint (lb CO<sub>2</sub>e / lb FPCM)  
broken down by category



On-Site Enteric



On-Site Energy Use



On-Site Manure



Feed Production



# The “Why” behind FARMES

**License to operate** - Showcase U.S. dairy’s environmental progress; unify response to customer / consumer interests with a program designed by / for U.S. dairy

**Operational insights** – Highlight win-win opportunities for the business and the environment, e.g. through scenario analysis

**Gateway to opportunity** – Facilitate access to technical assistance, grants, cost-share, and more

lb CO2e / lb FPCM					
Emissions Source	Baseline	Scenario 1	Diff from Baseline	Scenario 3	Diff from Baseline
Feed Production	0.276	0.276	0	0.233	-0.043
On-Site Manure	0.367	0.376	0.009	0.286	-0.082
On-Site Energy	0.127	0.127	0	0.104	-0.023
On-Site Enteric	0.444	0.444	0	0.373	-0.07
<b>Total</b>	<b>1.214</b>	<b>1.223</b>	<b>0.009</b>	<b>0.996</b>	<b>-0.218</b>
Annual Milk Production	-	-	0%	-	11%



PRESS RELEASES | JULY 22, 2025

## Dairy Farmer Options To Earn From Sustainability Practices Increasing

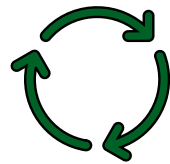
California Dairies, Inc., National Milk Producers Federation and Athian are joining forces to develop and monetize a new protocol for reducing dairy emissions





# FARMES Version 3.0

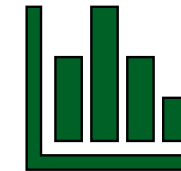
- Uses a new a process-based model, the Ruminant Farm Systems model (RuFaS)



Account for physical, chemical, and biologic cycles



Provide ability to extrapolate beyond known conditions (“what-if” scenario analysis)



Generate environmental and economic analysis of multiple management scenarios





# FARMES V3: Scenario Analysis

- Option to run scenarios by modifying any / multiple data inputs. Comparison table will show results of up to two scenarios and includes estimate of potential milk production changes.

lb CO2e / lb FPCM					
Emissions Source	Baseline	Scenario 1	Diff from Baseline	Scenario 3	Diff from Baseline
Feed Production	0.276	0.276	0	0.233	-0.043
On-Site Manure	0.367	0.376	0.009	0.286	-0.082
On-Site Energy	0.127	0.127	0	0.104	-0.023
On-Site Enteric	0.444	0.444	0	0.373	-0.07
<b>Total</b>	<b>1.214</b>	<b>1.223</b>	<b>0.009</b>	<b>0.996</b>	<b>-0.218</b>
Annual Milk Production	-	-	0%	-	11%





# WORKFORCE DEVELOPMENT

---

Promoting safe, exceptional  
work environments

# WORKFORCE DEVELOPMENT

*Focuses on HR and safety management*

## ON-FARMEVALUATIONS

- Bring value to the farm by offering information about HR/safety best practices
- Voluntary opt-in for FARMparticipants
- Help FARMparticipants provide assurances to customers and consumers



# WORKFORCE DEVELOPMENT

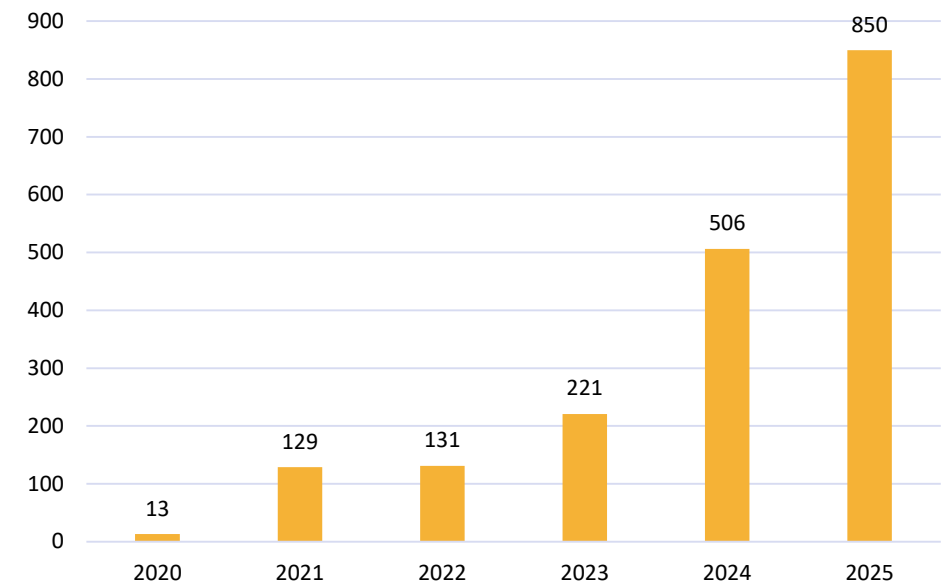
*Focuses on HR and safety management with free, dairy-focused resources*

**2,000+** assessments completed since 2020

**15** participating organizations representing **60%** of milk supply

- Provides assurances + unifies response to growing external interests from supply chain
- Brings value to the farm by offering information about HR/safety best practices
- Voluntary opt-in for FARM Participants
- Version 2.0 launched July 2025

Number of FARM WFD Evaluations by Year





# BIOSECURITY

---

Safeguarding herd  
and employee health

# BIOSECURITY

Launched in **March 2021**

Supported by USDA cooperative agreement and grant

Resources and templates for on-farm biosecurity

## **What's coming:**

- Second-party evaluator training and certification program
- Data sharing portal to support Secure Milk Supply



# BIOSECURITY

## Everyday Biosecurity

- FARM Animal Care Evaluation includes Biosecurity standards
- Includes daily steps to protect cattle and employees from disease exposure
- Reference manual to outline best practices



BIOSECURITY

## Enhanced Biosecurity

- Voluntary participation
- Provides farmers with tools to ensure business continuity should foreign animal disease outbreak occur



160+ Evaluators  
Trained

*21 Enhanced Biosecurity  
Protocols*



# Biosecurity

- Expanding online enhanced biosecurity training
- Hosted two in-person enhanced biosecurity trainings
- Updating Secure Milk Supply plan





# CONTACT

 2107 Wilson Blvd., Suite 600  
Arlington, VA 22201

.....  
 (703) 243-6111

 DAIRYFARM@NMPF.ORG

 NATIONALDAIRYFARM.COM

    #FARMproud



THANK YOU

[jjonker@nmpf.org](mailto:jjonker@nmpf.org)